

# MAY

Frank

Molly

Ben

Anna



23  
Monday

8:30 Give Blood  
Working late

TOOTHBRUSHES  
Buy seeds  
DENTIST 4:30

Take Sims to Jamal

HUGE MATHS TEST!!

Birthday Presents for Grandad



24  
Tuesday

GOVS meeting 8pm  
Tennis

Remember Favourite Wilson

Becky after school

mum JAFFACAKES  
cuttlefish

25  
Wednesday

Phoe Stan  
Badminton 7.00

Finish book  
Annual Review 3pm

BANDPRACTICE  
Scout Subs

DRAMA CLUB



26  
Thursday

FINAL HOLIDAY DEPOSIT  
Suit - Dry cleaners

Book Club  
Chloe's 8pm

JABS

buy earplugs!

Detention

Violin lesson 9.15am



27  
Friday

GUTTERS!!  
Dinner with Boss FL & GLE  
Leaflets

Key

English Essay  
no chance!

Nick Ben's Walkman

Sleepover at Sofas

BIN BAGS!!!  
Dishwasher Salt



28  
Saturday

UNITED 2.30  
Make Cake

7.30 Jog with Debbie  
Aromatherapy  
The Lab 3.00

Call Megs  
School MAC

Odeon 6.45

Pocket money (dont forget mum!!)

Ha Ha Ben's got a girlfriend!

Wash P.E Kits



29  
Sunday

DAD'S 75th  
Royal Oak 12.15

Swimming



POND

Cake!

# THIS YEAR 2021

| JANUARY |               | FEBRUARY |            | MARCH |               | APRIL |              | MAY |               | JUNE |              |
|---------|---------------|----------|------------|-------|---------------|-------|--------------|-----|---------------|------|--------------|
| M       | 4 11 18 25    | M        | 1 8 15 22  | M     | 1 8 15 22 29  | M     | 5 12 19 26   | M   | 3 10 17 24 31 | M    | 7 14 21 28   |
| T       | 5 12 19 26    | T        | 2 9 16 23  | T     | 2 9 16 23 30  | T     | 6 13 20 27   | T   | 4 11 18 25    | T    | 1 8 15 22 29 |
| W       | 6 13 20 27    | W        | 3 10 17 24 | W     | 3 10 17 24 31 | W     | 7 14 21 28   | W   | 5 12 19 26    | W    | 2 9 16 23 30 |
| T       | 7 14 21 28    | T        | 4 11 18 25 | T     | 4 11 18 25    | T     | 1 8 15 22 29 | T   | 6 13 20 27    | T    | 3 10 17 24   |
| F       | 1 8 15 22 29  | F        | 5 12 19 26 | F     | 5 12 19 26    | F     | 2 9 16 23 30 | F   | 7 14 21 28    | F    | 4 11 18 25   |
| S       | 2 9 16 23 30  | S        | 6 13 20 27 | S     | 6 13 20 27    | S     | 3 10 17 24   | S   | 1 8 15 22 29  | S    | 5 12 19 26   |
| S       | 3 10 17 24 31 | S        | 7 14 21 28 | S     | 7 14 21 28    | S     | 4 11 18 25   | S   | 2 9 16 23 30  | S    | 6 13 20 27   |

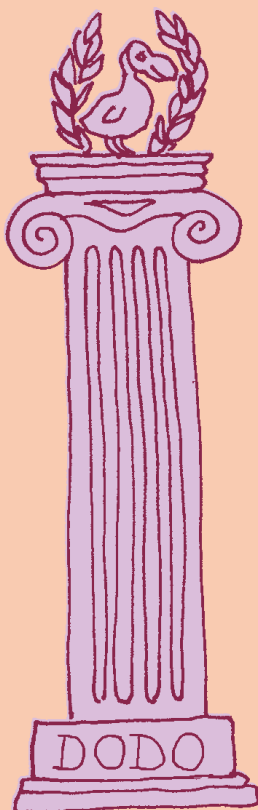
| JULY |               | AUGUST |               | SEPTEMBER |              | OCTOBER |               | NOVEMBER |              | DECEMBER |               |
|------|---------------|--------|---------------|-----------|--------------|---------|---------------|----------|--------------|----------|---------------|
| M    | 5 12 19 26    | M      | 2 9 16 23 30  | M         | 6 13 20 27   | M       | 4 11 18 25    | M        | 1 8 15 22 29 | M        | 6 13 20 27    |
| T    | 6 13 20 27    | T      | 3 10 17 24 31 | T         | 7 14 21 28   | T       | 5 12 19 26    | T        | 2 9 16 23 30 | T        | 7 14 21 28    |
| W    | 7 14 21 28    | W      | 4 11 18 25    | W         | 1 8 15 22 29 | W       | 6 13 20 27    | W        | 3 10 17 24   | W        | 1 8 15 22 29  |
| T    | 1 8 15 22 29  | T      | 5 12 19 26    | T         | 2 9 16 23 30 | T       | 7 14 21 28    | T        | 4 11 18 25   | T        | 2 9 16 23 30  |
| F    | 2 9 16 23 30  | F      | 6 13 20 27    | F         | 3 10 17 24   | F       | 1 8 15 22 29  | F        | 5 12 19 26   | F        | 3 10 17 24 31 |
| S    | 3 10 17 24 31 | S      | 7 14 21 28    | S         | 4 11 18 25   | S       | 2 9 16 23 30  | S        | 6 13 20 27   | S        | 4 11 18 25    |
| S    | 4 11 18 25    | S      | 1 8 15 22 29  | S         | 5 12 19 26   | S       | 3 10 17 24 31 | S        | 7 14 21 28   | S        | 5 12 19 26    |

Key holidays & festivals for a selection of major faiths are shown in the main diary

The phases of the moon will be shown thus :-

● NEW MOON ☾ FIRST QUARTER ○ FULL MOON ☽ LAST QUARTER

# NEXT YEAR 2022



| JANUARY |               | FEBRUARY |            | MARCH |               |
|---------|---------------|----------|------------|-------|---------------|
| M       | 3 10 17 24 31 | M        | 7 14 21 28 | M     | 7 14 21 28    |
| T       | 4 11 18 25    | T        | 1 8 15 22  | T     | 1 8 15 22 29  |
| W       | 5 12 19 26    | W        | 2 9 16 23  | W     | 2 9 16 23 30  |
| T       | 6 13 20 27    | T        | 3 10 17 24 | T     | 3 10 17 24 31 |
| F       | 7 14 21 28    | F        | 4 11 18 25 | F     | 4 11 18 25    |
| S       | 1 8 15 22 29  | S        | 5 12 19 26 | S     | 5 12 19 26    |
| S       | 2 9 16 23 30  | S        | 6 13 20 27 | S     | 6 13 20 27    |

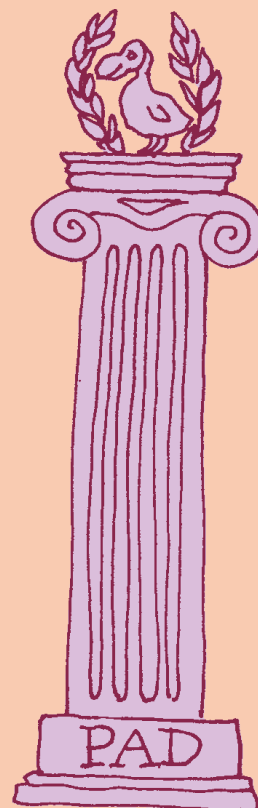
| APRIL |              | MAY |               | JUNE |              |
|-------|--------------|-----|---------------|------|--------------|
| M     | 4 11 18 25   | M   | 2 9 16 23 30  | M    | 6 13 20 27   |
| T     | 5 12 19 26   | T   | 3 10 17 24 31 | T    | 7 14 21 28   |
| W     | 6 13 20 27   | W   | 4 11 18 25    | W    | 1 8 15 22 29 |
| T     | 7 14 21 28   | T   | 5 12 19 26    | T    | 2 9 16 23 30 |
| F     | 1 8 15 22 29 | F   | 6 13 20 27    | F    | 3 10 17 24   |
| S     | 2 9 16 23 30 | S   | 7 14 21 28    | S    | 4 11 18 25   |
| S     | 3 10 17 24   | S   | 1 8 15 22 29  | S    | 5 12 19 26   |

| JULY |               | AUGUST |               | SEPTEMBER |              |
|------|---------------|--------|---------------|-----------|--------------|
| M    | 4 11 18 25    | M      | 1 8 15 22 29  | M         | 5 12 19 26   |
| T    | 5 12 19 26    | T      | 2 9 16 23 30  | T         | 6 13 20 27   |
| W    | 6 13 20 27    | W      | 3 10 17 24 31 | W         | 7 14 21 28   |
| T    | 7 14 21 28    | T      | 4 11 18 25    | T         | 1 8 15 22 29 |
| F    | 1 8 15 22 29  | F      | 5 12 19 26    | F         | 2 9 16 23 30 |
| S    | 2 9 16 23 30  | S      | 6 13 20 27    | S         | 3 10 17 24   |
| S    | 3 10 17 24 31 | S      | 7 14 21 28    | S         | 4 11 18 25   |

| OCTOBER |               | NOVEMBER |              | DECEMBER |               |
|---------|---------------|----------|--------------|----------|---------------|
| M       | 3 10 17 24 31 | M        | 7 14 21 28   | M        | 5 12 19 26    |
| T       | 4 11 18 25    | T        | 1 8 15 22 29 | T        | 6 13 20 27    |
| W       | 5 12 19 26    | W        | 2 9 16 23 30 | W        | 7 14 21 28    |
| T       | 6 13 20 27    | T        | 3 10 17 24   | T        | 1 8 15 22 29  |
| F       | 7 14 21 28    | F        | 4 11 18 25   | F        | 2 9 16 23 30  |
| S       | 1 8 15 22 29  | S        | 5 12 19 26   | S        | 3 10 17 24 31 |
| S       | 2 9 16 23 30  | S        | 6 13 20 27   | S        | 4 11 18 25    |



Published by Dodo Pad Ltd. The Old Stables, Liskey Hill, Perranporth, Cornwall TR6 0BB  
 Compilation & Original Illustration by Naomi McBride 2020

Illustrations © Dodo Pad Ltd 2020 © B M Peak 1995, 2020 © Rose Verney 1965, 2020

Dodo-Pad Desk Diary – ISBN 978 0 857702 33 3 / DodoPAX loose-leaf Diary – ISBN 978 0 87702 36 4

All rights reserved. No part of this publication may be reproduced or transmitted in any form, or by any means, electronic, mechanical, photocopying, recording or otherwise, or stored in any retrieval system, without prior permission of the publisher.

Reprographics by Peta Bull Design.

Printed using paper responsibly sourced from sustainable forests.



This Dodo Pad is indodispensable. If found please return to:-

## HOW TO GET THE BEST FROM YOUR DODO-PAD



Special facilities have been made in the design of the **DODO-PAD** for this essential activity. The **DODO-PAD** encourages you to doodle creatively and thereby preserve the covers of telephone directories, the utility company's bill, other people's books, etc. Those normally inhibited from doodling while they telephone will find suggestive hints to quicken their imagination on every diary page. A blank, or nearly blank, space is also provided for this purpose on all facing pages.

## FURTHER USES FOR THE DODO PAD

Finished sheets can be torn out and are especially suitable for making paper boats, darts, book-markers or tapers for lighting a barbeque. If folded into eight, a **DODO-PAD** page comes in handy for wedging up a rickety table or stuffing onto a shaky sash-window.

The most attractively doodled pages make a personal type of Christmas card.

## INSECTICIDE

The **DODO-PAD** makes an ideal weapon for swatting flies. Held flat on the palm of the hand, it can also be used as a missile against wasps and mosquitoes on the ceiling.

The **DODO-PAD** is so designed that it may be carried in a shopping basket or kept chained to the telephone (for instructions on how to chain your **DODO-PAD** to the telephone see para. on opposite page).



“While he was giggling over my **DODO-PAD** I was able to get dressed and call the police” (name supplied).

## **DODO-PAD ALBUMS**

If, at the end of a year, you wish to keep what amounts to a unique record of your, or your family’s conscious and unconscious experience, we supply leather-bound folders with gold embossed lettering. Prices from £1069.50.

## **CHRISTMAS AND BIRTHDAYS**

Extra pages are provided at the end to facilitate the systematic giving, or receipt, of presents. And for playing...

## **THE DODO-PAD GAME**

Time can be pleasantly spent, while waiting for a Call Centre to answer, by imagining yourself as some well-known personality and filling in his or her engagements. But bear in mind the laws of libel, if your **DODO-PAD** is liable to be seen by others outside the family circle.

## **HOW TO CHAIN YOUR DODO-PAD TO THE TELEPHONE**

Any reputable ironmonger will supply you with a length of thin chain. A **DODO-PADLOCK** can be obtained from us. Price £799.99, including postage.

## **DODO-PADDLERS ARE ADVISED TO ORDER THEIR NEXT YEAR’S DODO-PAD WELL IN ADVANCE TO BE SURE OF SAFE DELIVERY**

© Rose Verney 1965, 2020 © B. M. Peak 1995, 2020

While Dodo Pad (the Publishers) makes every effort to ensure the accuracy of the information contained in this diary, no representations or warranties are made as to the accuracy, completeness, or suitability for any purpose of the information contained, which may include technical inaccuracies or typographical errors which may be outside of the Publisher’s control such as changes to Bank Holiday dates. All liability of the Publisher howsoever arising for such inaccuracies or errors is expressly excluded to the fullest extent permitted by law. The Publisher shall not be liable for any compensatory, direct, indirect or consequential damages, loss of data, income or profit, loss of or damage to property or claims of third parties. Dodo Pad is a trading name of Dodo Pad Limited.

# 2021

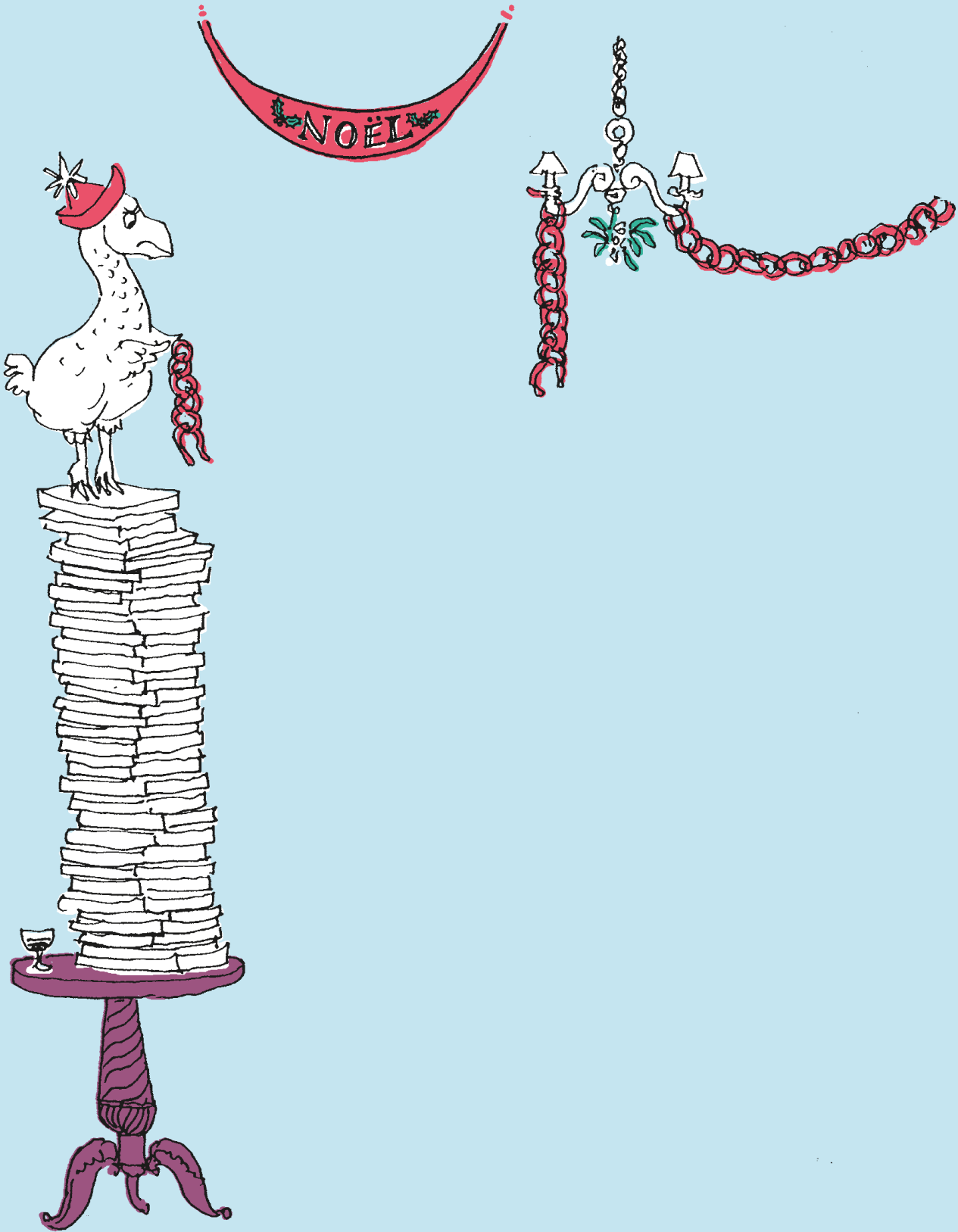
| JANUARY 2021 |   |       | FEBRUARY 2021 |                      |       |
|--------------|---|-------|---------------|----------------------|-------|
| 1 F          | NEW YEAR'S DAY (UK, EIRE, US, AUS & NZ) | 17 Su | 1 M           |                      | 17 w  |
| 2 s          |   | 18 M  | 2 T           |                      | 18 Th |
| 3 Su         |   | 19 T  | 3 w           |                      | 19 F  |
| 4 M          | BANK HOLIDAY (SCOT)                     | 20 w  | 4 Th          |                      | 20 s  |
| 5 T          |   | 21 Th | 5 F           |                      | 21 Su |
| 6 w          |   | 22 F  | 6 s           | WAITANGI DAY (NZ)    | 22 M  |
| 7 Th         |   | 23 s  | 7 Su          |                      | 23 T  |
| 8 F          |   | 24 Su | 8 M           |                      | 24 w  |
| 9 s          |   | 25 M  | 9 T           |                      | 25 Th |
| 10 Su        |   | 26 T  | 10 w          |                      | 26 F  |
| 11 M         |   | 27 w  | 11 Th         |                      | 27 s  |
| 12 T         |   | 28 Th | 12 F          | CHINESE NEW YEAR     | 28 Su |
| 13 w         |   | 29 F  | 13 s          |                      |       |
| 14 Th        |   | 30 s  | 14 Su         |                      |       |
| 15 F         |   | 31 Su | 15 M          | PRESIDENTS' DAY (US) |       |
| 16 s         |   |       | 16 T          | SHROVE TUESDAY       |       |
| MARCH 2021   |   |       | APRIL 2021    |                      |       |
| 1 M          |   | 17 w  | 1 Th          |                      | 17 s  |
| 2 T          |   | 18 Th | 2 F           | GOOD FRIDAY          | 18 Su |
| 3 w          |   | 19 F  | 3 s           |                      | 19 M  |
| 4 Th         |   | 20 s  | 4 Su          | EASTER DAY           | 20 T  |
| 5 F          |   | 21 Su | 5 M           | EASTER MONDAY        | 21 w  |
| 6 s          |   | 22 M  | 6 T           |                      | 22 Th |
| 7 Su         |   | 23 T  | 7 w           |                      | 23 F  |
| 8 M          | CANBERRA DAY (AUS) COMMONWEALTH DAY     | 24 w  | 8 Th          |                      | 24 s  |
| 9 T          |   | 25 Th | 9 F           |                      | 25 Su |
| 10 w         |   | 26 F  | 10 s          |                      | 26 M  |
| 11 Th        |   | 27 s  | 11 Su         |                      | 27 T  |
| 12 F         |   | 28 Su | 12 M          |                      | 28 w  |
| 13 s         |   | 29 M  | 13 T          | RAMADAN BEGINS       | 29 Th |
| 14 Su        | MOTHER'S DAY (UK & EIRE)                | 30 T  | 14 w          |                      | 30 F  |
| 15 M         |   | 31 w  | 15 Th         |                      |       |
| 16 T         |   |       | 16 F          |                      |       |
| MAY 2021     |   |       | JUNE 2021     |                      |       |
| 1 s          |   | 17 M  | 1 T           |                      | 17 Th |
| 2 Su         |   | 18 T  | 2 w           |                      | 18 F  |
| 3 M          | MAY BANK HOLIDAY (UK & EIRE)            | 19 w  | 3 Th          |                      | 19 s  |
| 4 T          |   | 20 Th | 4 F           |                      | 20 Su |
| 5 w          |   | 21 F  | 5 s           |                      | 21 M  |
| 6 Th         |   | 22 s  | 6 Su          |                      | 22 T  |
| 7 F          |   | 23 Su | 7 M           | BANK HOLIDAY (EIRE)  | 23 w  |
| 8 s          |   | 24 M  | 8 T           |                      | 24 Th |
| 9 Su         | MOTHER'S DAY (US & AUS)                 | 25 T  | 9 w           |                      | 25 F  |
| 10 M         |   | 26 w  | 10 Th         |                      | 26 s  |
| 11 T         |   | 27 Th | 11 F          |                      | 27 Su |
| 12 w         |   | 28 F  | 12 s          |                      | 28 M  |
| 13 Th        |   | 29 s  | 13 Su         |                      | 29 T  |
| 14 F         |   | 30 Su | 14 M          |                      | 30 w  |
| 15 s         |   | 31 M  | 15 T          |                      |       |
| 16 Su        |   |       | 16 w          |                      |       |

**Public Holidays et al.**  
 This information is correct at time of going to press. The publishers can accept no responsibility for any errors.



# 2021

| JULY 2021      |   |       | AUGUST 2021       |       |  |
|----------------|---|-------|-------------------|-------|--|
| 1 TH           | CANADA DAY                                  | 17 S  |                   | 1 SU  |  |
| 2 F            |   | 18 SU |                   | 2 M   | SUMMER BANK HOLIDAY (SCOTLAND & EIRE)      |
| 3 S            |   | 19 M  |                   | 3 T   |  |
| 4 SU           | INDEPENDENCE DAY (US)                       | 20 T  | EID AL-ADHA       | 4 W   |  |
| 5 M            |   | 21 W  |                   | 5 TH  |  |
| 6 T            |   | 22 TH |                   | 6 F   |  |
| 7 W            |   | 23 F  |                   | 7 S   |  |
| 8 TH           |   | 24 S  |                   | 8 SU  |  |
| 9 F            |   | 25 SU |                   | 9 M   |  |
| 10 S           |   | 26 M  |                   | 10 T  | ISLAMIC NEW YEAR                           |
| 11 SU          |   | 27 T  |                   | 11 W  |  |
| 12 M           | PUBLIC HOLIDAY (N. IRELAND)                 | 28 W  |                   | 12 TH |  |
| 13 T           |   | 29 TH |                   | 13 F  |  |
| 14 W           | BASTILLE DAY                                | 30 F  |                   | 14 S  |  |
| 15 TH          |   | 31 S  |                   | 15 SU |  |
| 16 F           |   |       |                   | 16 M  |  |
| SEPTEMBER 2021 |   |       | OCTOBER 2021      |       |  |
| 1 W            |   | 17 F  |                   | 1 F   |  |
| 2 TH           |   | 18 S  |                   | 2 S   |  |
| 3 F            |   | 19 SU |                   | 3 SU  |  |
| 4 S            |   | 20 M  |                   | 4 M   |  |
| 5 SU           | FATHER'S DAY (AUS)                          | 21 T  |                   | 5 T   |  |
| 6 M            | LABOR DAY (US & CAN)                        | 22 W  |                   | 6 W   |  |
| 7 T            | ROSH HASHANAH                               | 23 TH |                   | 7 TH  |  |
| 8 W            |   | 24 F  |                   | 8 F   |  |
| 9 TH           |   | 25 S  |                   | 9 S   |  |
| 10 F           |   | 26 SU |                   | 10 SU |  |
| 11 S           |   | 27 M  |                   | 11 M  | COLUMBUS DAY (US)<br>THANKSGIVING (CANADA) |
| 12 SU          |   | 28 T  |                   | 12 T  |  |
| 13 M           |   | 29 W  |                   | 13 W  |  |
| 14 T           |   | 30 TH |                   | 14 TH |  |
| 15 W           |   |       |                   | 15 F  |  |
| 16 TH          | YOM KIPPUR                                  |       |                   | 16 S  |  |
| NOVEMBER 2021  |   |       | DECEMBER 2021     |       |  |
| 1 M            |   | 17 W  |                   | 1 W   |  |
| 2 T            |   | 18 TH |                   | 2 TH  |  |
| 3 W            |   | 19 F  |                   | 3 F   |  |
| 4 TH           | DIWALI                                      | 20 S  |                   | 4 S   |  |
| 5 F            | GUY FAWKES' NIGHT                           | 21 SU |                   | 5 SU  |  |
| 6 S            |   | 22 M  |                   | 6 M   |  |
| 7 SU           |   | 23 T  |                   | 7 T   |  |
| 8 M            |   | 24 W  |                   | 8 W   |  |
| 9 T            |   | 25 TH | THANKSGIVING (US) | 9 TH  |  |
| 10 W           |   | 26 F  |                   | 10 F  |  |
| 11 TH          | VETERANS' DAY (US)<br>REMEMBRANCE DAY (CAN) | 27 S  |                   | 11 S  |  |
| 12 F           |   | 28 SU |                   | 12 SU |  |
| 13 S           |   | 29 M  | HANUKKAH          | 13 M  |  |
| 14 SU          | REMEMBRANCE SUNDAY (UK)                     | 30 T  |                   | 14 T  |  |
| 15 M           |   |       |                   | 15 W  |  |
| 16 T           |   |       |                   | 16 TH |  |
|                |   |       |                   |       | 17 F                                       |
|                |   |       |                   |       | 18 S                                       |
|                |   |       |                   |       | 19 SU                                      |
|                |   |       |                   |       | 20 M                                       |
|                |   |       |                   |       | 21 T                                       |
|                |   |       |                   |       | 22 W                                       |
|                |   |       |                   |       | 23 TH                                      |
|                |   |       |                   |       | 24 F                                       |
|                |   |       |                   |       | 25 S                                       |
|                |   |       |                   |       | 26 SU                                      |
|                |   |       |                   |       | 27 M                                       |
|                |   |       |                   |       | 28 T                                       |
|                |   |       |                   |       | 29 W                                       |
|                |   |       |                   |       | 30 TH                                      |
|                |   |       |                   |       | 31 F                                       |





# December 2020



**21**  
Monday

Winter Solstice

Week 52

3

**22**  
Tuesday

**23**  
Wednesday

**24**  
Thursday

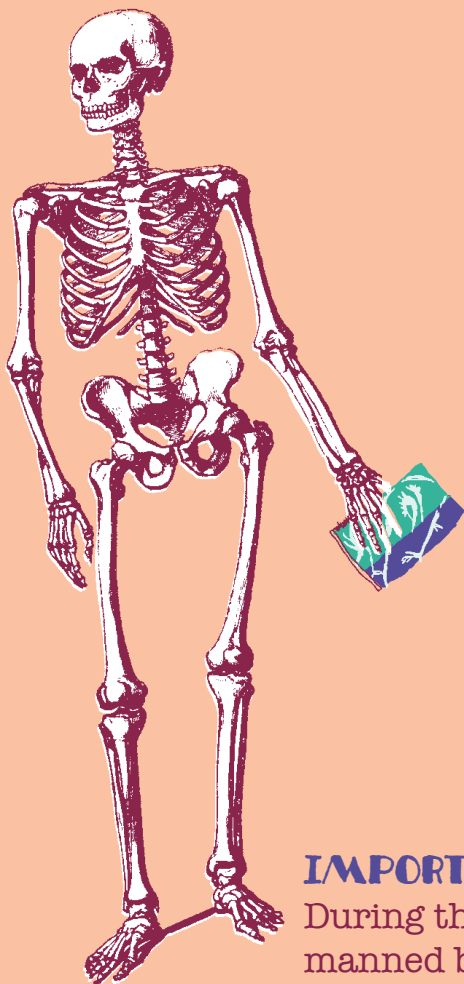
**25**  
Friday

Christmas Day

**26**  
Saturday

Boxing Day UK AUS NZ St Stephen's Day IRE

**27**  
Sunday

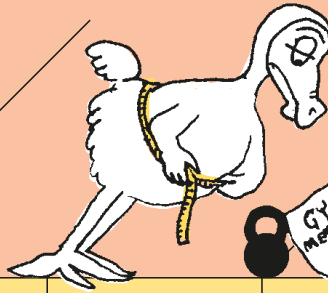


**IMPORTANT ANNOUNCEMENT**

During the holiday period the Dodo Pad offices will be manned by a skeleton staff .

# DECEMBER

## January 2021



Week 53

28

Monday

Bank Holiday UK & IRE

29

Tuesday

30

Wednesday

31

Thursday

New Year's Eve



Friday

New Year's Day

2

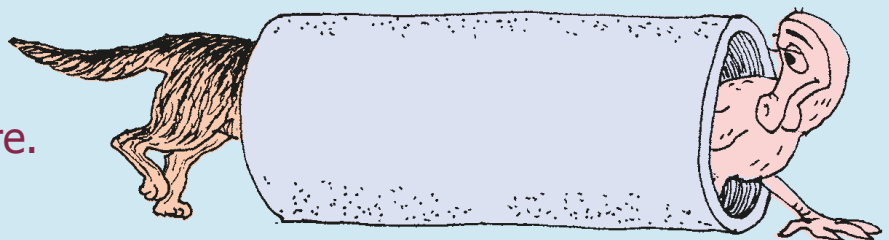
Saturday

3

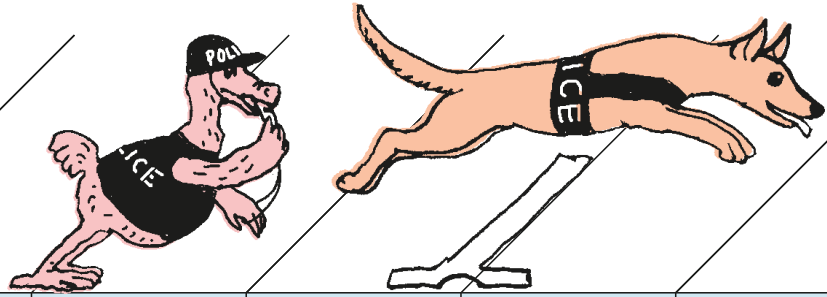
Sunday

|  |  |  |  |   |
|--|--|--|--|---|
|  |  |  |  |   |
|  |  |  |  |   |
|  |  |  |  | ○ |
|  |  |  |  |   |
|  |  |  |  |   |
|  |  |  |  |   |
|  |  |  |  |   |

If you're being chased by  
a police dog, try not to go  
through a tunnel, then on  
to a little see-saw, then  
jump through a hoop of fire.  
They're trained for that!  
Milton Jones



January  
2021



18

MONDAY

Martin Luther King Day US

19

TUESDAY

20

WEDNESDAY

21

THURSDAY

1927 Death of Sir Charles Warren, the first person to try to use dogs to hunt criminals - using bloodhounds to track Jack the Ripper

22

FRIDAY

23

SATURDAY

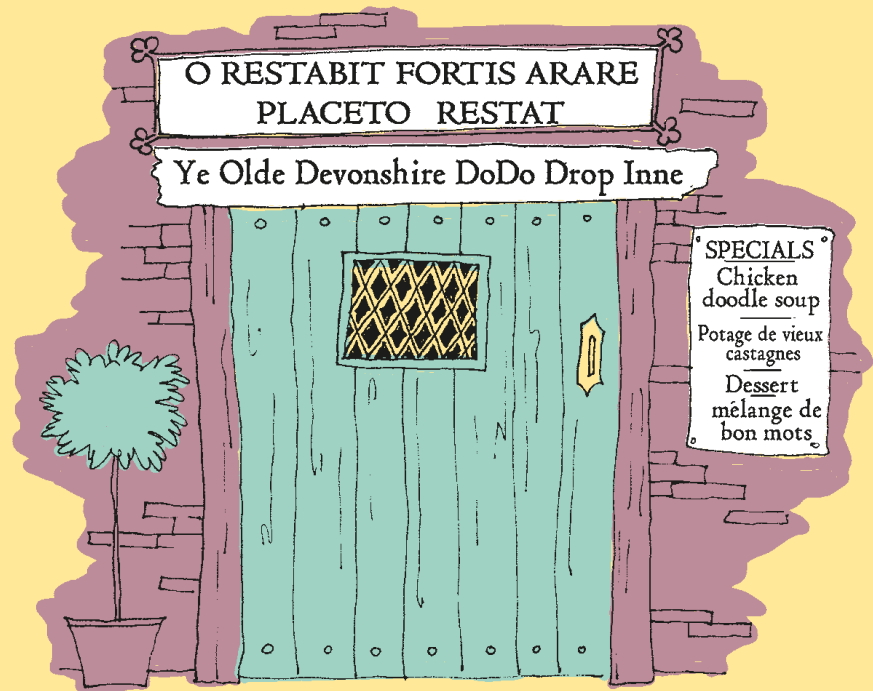
24

SUNDAY

Week 3

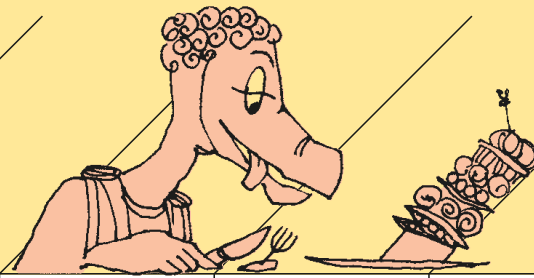
3

On a recent walking tour of Devon, Lord Dodo and his party stopped at a quaint gastropub for lunch. Noticing the unusual inscription above the door, he reached for his Latin Grammar *vademecum*. He'd left it at home (very unlike him) but was still able to puzzle out the meaning...can you?



FEBRUARY

MMXXI



22

MON  
DAY

Week 8

23

TUES  
DAY

24

WED  
NES  
DAY

25

THURS  
DAY

26

FRI  
DAY

*Purim*

27

SATUR  
DAY

*341BC Birth of Epicurus, Greek philosopher and gourmet*

28

SUN  
DAY





## *How many dogs does it take to change a lightbulb?*

**Golden Retriever:** The sun is shining, the day is young, we've got our whole lives ahead of us, and you're inside worrying about a stupid bulb?

**Border Collie:** Just one. And then I'll replace any wiring that's not up to date.

**Rottweiler:** Make me.

**Boxer:** Who cares? I can still play with my squeaky toys in the dark.

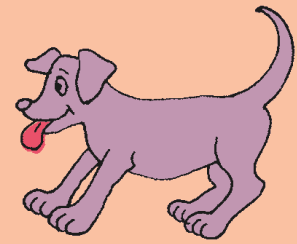
**Lab:** Oh, me, me!!!  
Pleeeeeeeeeze let me change the light bulb!  
Can I? Can I? Can I?  
Pleeeeeeeeeze...!

**German Shepherd:** I'll change it as soon as I've led these people from the dark, checked to make sure I haven't missed any, and make just one more perimeter patrol to see that no one has tried to take advantage of the situation.

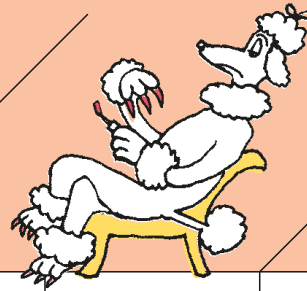
**Jack Russell:** I'll just pop it in while I'm bouncing off the walls and furniture.

**Greyhound:** It isn't moving. Who cares?..

**Poodle:** I'll just blow in the Border Collie's ear and he'll do it. By the time he finishes rewiring the house, my nails will be dry.



March~  
April  
2021



29  
Monday

|  |  |  |  |         |
|--|--|--|--|---------|
|  |  |  |  | Week 13 |
|--|--|--|--|---------|

Holi

30  
Tuesday

|  |  |  |  |  |
|--|--|--|--|--|
|  |  |  |  |  |
|--|--|--|--|--|

31  
Wednesday

|  |  |  |  |  |
|--|--|--|--|--|
|  |  |  |  |  |
|--|--|--|--|--|

1  
Thursday

|  |  |  |  |  |
|--|--|--|--|--|
|  |  |  |  |  |
|--|--|--|--|--|

2  
Friday

|  |  |  |  |  |
|--|--|--|--|--|
|  |  |  |  |  |
|--|--|--|--|--|

Good Friday

3  
Saturday

|  |  |  |  |  |
|--|--|--|--|--|
|  |  |  |  |  |
|--|--|--|--|--|

4  
Sunday

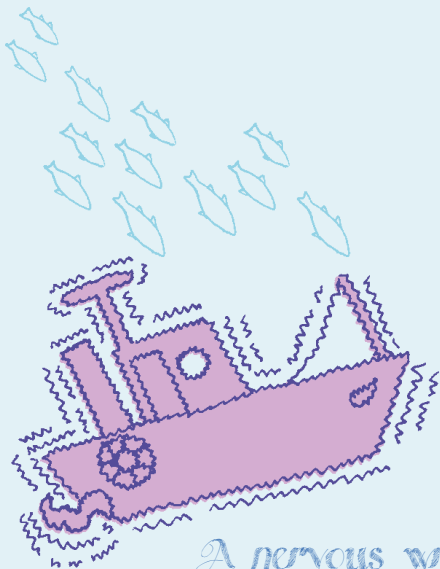
|  |  |  |                   |  |
|--|--|--|-------------------|--|
|  |  |  | DST ends AUS & NZ |  |
|--|--|--|-------------------|--|

Easter Day

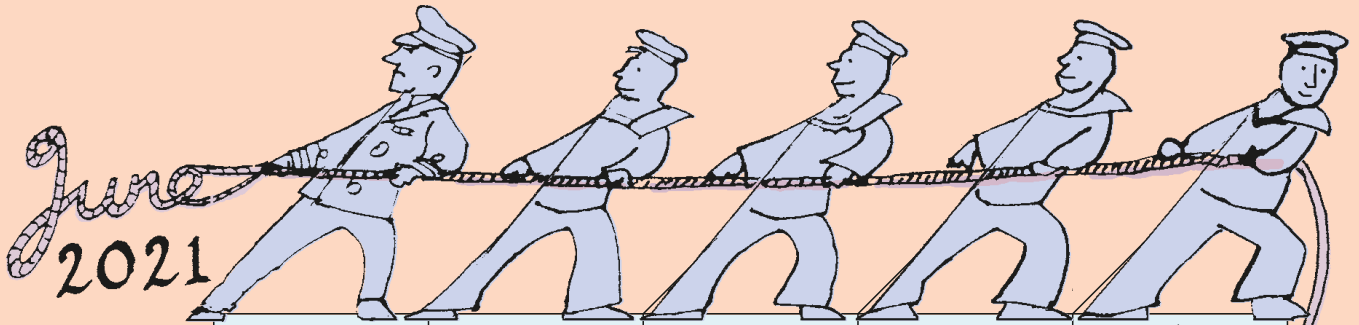
1873 Founding of the Kennel Club



If a shipshape ship shop stocks six shipshape shop-soiled ships,,  
How many shipshape shop-soiled ships would six shipshape ship shops stock?



*A nervous wreck*



7  
Monday

8  
Tuesday

9  
Wednesday

10  
Thursday

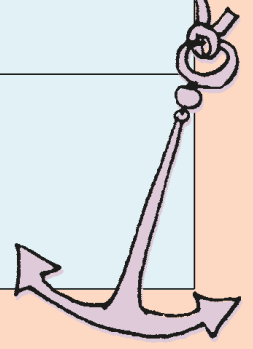
11  
Friday

12  
Saturday

13  
Sunday

|                  |  |                     |  |         |
|------------------|--|---------------------|--|---------|
|                  |  |                     |  | Week 23 |
| Bank Holiday IRE |  | Queen's Birthday NZ |  |         |
|                  |  |                     |  |         |
|                  |  |                     |  |         |
|                  |  |                     |  |         |
|                  |  |                     |  |         |
|                  |  |                     |  |         |
|                  |  |                     |  |         |

2019 Seafest began in Cork, celebrating Ireland's marine heritage



What do you call an  
alligator in a vest?



An investigator!

# JULY 2021



Week 27

5  
Monday

6  
Tuesday

7  
Wednesday

8  
Thursday

9  
Friday

10  
Saturday

11  
Sunday

|  |  |  |  |  |
|--|--|--|--|--|
|  |  |  |  |  |
|  |  |  |  |  |
|  |  |  |  |  |
|  |  |  |  |  |
|  |  |  |  |  |
|  |  |  |  |  |
|  |  |  |  |  |
|  |  |  |  |  |
|  |  |  |  |  |
|  |  |  |  |  |

1930 Death of Arthur Conan Doyle, creator of Sherlock Holmes



A centurion is a soldier  
who's been in the Roman  
army for 100 years.

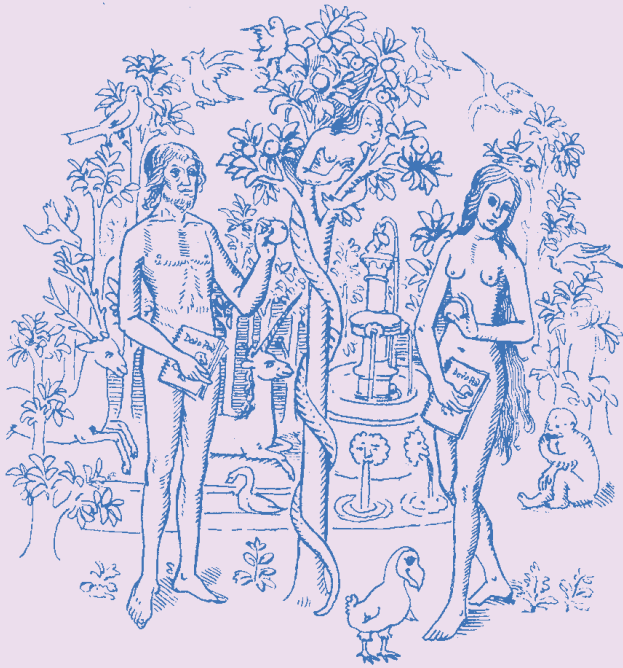
LITTLE MISS DODO'S  
HISTORY LESSON







The earliest recorded use for the Dodo Pad...



## ALTERNATIVE FACT

The apple tree in the Garden of Eden was a variety rarely seen these days—  
Malus Aforethought



Week 42

18

Monday

19

Tuesday

20

Wednesday

21

Thursday

22

Friday

23

Saturday

24

Sunday

|  |  |  |  |   |
|--|--|--|--|---|
|  |  |  |  |   |
|  |  |  |  |   |
|  |  |  |  | ○ |
|  |  |  |  |   |
|  |  |  |  |   |
|  |  |  |  |   |
|  |  |  |  |   |

6pm on 4004 BC. The world began (according to Archbishop Ussher of Armagh 1581 - 1656)